

GILNAHIRK PRIMARY SCHOOL WEEKLY UPDATE



Our School Motto: Today's Learning for Tomorrow's World...

Our School Vision Statement...

At Gilnahirk Primary School, we seek to provide a happy and caring learning environment for each child. We hope that by helping them realise their potential, celebrating their achievements, respecting their differences and encouraging mutual respect, we will foster self esteem and provide a solid foundation for their future.

Dear parent/carer,

We have reached the end of another month and Christmas preparations are now in full swing. Christmas trees are appearing in classrooms, the P1-3 children are very busy with nativity preparations and very soon, many of our P4-7 children will be rehearsing for our Carol Service

This week's update does not include much by way of new information but there are lots of new photos from another busy week and, of course, it's always good to stay informed about the upcoming Christmas season and other goings on.

REMINDER ABOUT NUT ALLERGIES...



Please remember that we strive to make Gilnahirk PS as nut free as possible due to a number of children who have severe nut allergies.

Therefore, you are reminded that nuts and nut based products (like nutella, peanut butter etc.) should not be sent in to school. *Thank you for your cooperation.*

REMINDER ABOUT TUMMY BUG ABSENCE...



The last few weeks have seen quite an uptick in the number of cases of tummy bugs in school.

In order to minimise spread, you are reminded that any child displaying symptoms of a tummy bug (nausea, vomiting, diarrhea) **must be kept off school until 48 hours after their last symptom**. The following link provides helpful information from NI Direct:

<https://www.nidirect.gov.uk/conditions/diarrhoea-and-vomiting>

OPEN MORNING FOR PROSPECTIVE P1 PARENTS - FRIDAY 5TH DECEMBER...



Do you or does someone you know have a child due to start P1 in September 2026?

If so, you are invited to attend our Open Morning on **Friday 5th Decemr from 11am to 12.30pm**.

The format for the morning is very relaxed, with a short address by myself as Principal at 11am followed by guided tours of the school with our P7 tour guides.

There is no need to sign up - you can simply turn up and see for yourself what Gilnahirk Primary has to offer. School will be operating as normal so you will get to see life at GPS as it really is.

Feel free to share the link to our Open Day video:

<https://www.gilnahirkps.org.uk/children/gilnahirk-tv/gilnahirk-open-day>

The graphic below is a helpful summary of the key dates in the admissions process:



REMINDER - INCREASE IN SCHOOL DINNERS PRICE FROM JANUARY...



Another reminder that the Education Authority has announced that the price of a school meal will go from the current price of £2.60 to the new price of £3.10 **from January**.

Bookings for after Christmas are now open on School Money with the new price of £3.10.

CHRISTMAS AT GILNAHIRK!



The Christmas information included below will give you plenty of notice of what's coming up...

CHRISTMAS WREATH MAKING EVENING - FRI 5 DEC



Please see below for a message from the Parents' Association regarding this year's Christmas Wreath Making evening...

The Parents' Association warmly invite you, your friends and family to join us in welcoming the festive season with a Christmas Wreath making evening on Friday 5th December. The evening will be facilitated by Sow Grateful. They will provide everything you need and will coach you throughout the workshop to create a front door wreath to be proud of. The Parents' Association will provide nibbles and you can BYO. It will run from 7pm to 9pm. Places will be limited so please buy your ticket for £50 from the Teachers2Parents app (SchoolMoney) early to avoid disappointment. You will find the payment in the Shop section (Christmas wreath workshop).

Any questions can be directed to Elaine 07748040971 or Clare 07903806478

CHRISTMAS TREE SALE/CHRISTMAS FAIR - SAT 6 DEC



As noted above, **Saturday 6th December** will be our annual Christmas Tree sale and Christmas fair **(10am - 1pm)**.

Over the last couple of years, the Christmas fair aspect of the morning has grown to include lots of stalls/crafters etc, so I strongly encourage you to keep that morning clear in the diary and make every effort to attend.

Trees can be ordered using the web address or QR code on the image below...



P1-3 NATIVITIES - TUES 9 AND WED 10 DEC



In order to help you book a bit of time off work, or make other arrangements, please see below for the intended dates for our P1-P3 nativities. We will run these in the same way as the last few years, with each year group putting on 2 performances, one for each set of parents/grandparents etc.

Tuesday 9th December:

9.15am - P1 nativity for **P1Hodgen parents and grandparents**

10.20am - P2 nativity for **P2Boyd/Fish parents and grandparents**

11.15am - P3 nativity for **P3McCaffrey/Pitts parents and grandparents**

Wednesday 10th December:

9.15am - P1 nativity for **P1Gordon parents and grandparents**

10.20am - P2 nativity for **P2Collins/Pitts parents and grandparents**

11.15am - P3 nativity for **P3Johnston/Wallace parents and grandparents**

PLEASE NOTE, ON THE MORNING OF THE NATIVITIES, A FEE OF £2 PER PERSON WILL BE PAYABLE AT THE DOOR, TO COVER COSTS OF COSTUMES AND LICENSES ETC. THANK YOU.

P5-7 CINEMA TRIP - THURS 11 DEC



Our KS2 pupils (P5-7) will have their annual Christmas cinema trip on **Thursday 11th December**. Look out for further information and payment details in the upcoming weeks.

SANTA VISIT - FRI 12 DEC



On **Friday 12th December**, the big man himself will visit GPS, with a small gift for every child. Children can once again come in to school that day in a Christmas jumper (over normal uniform).

SCHOOL CAROL SERVICE - WED 17 DEC



As you may have seen in the dates for the diary section, we will hold our annual Carol Service in the College Hall at Our Lady and St Pat's College on the evening of **Wednesday 17th December at 7pm**. This is always a very well received service, with many parents in the past remarking positively about the respectful re-telling of the Christmas story through readings, songs and musical performance. It would be great to see a large turnout for one of the highlights of our school year.

CHRISTMAS CHARITIES...

tearfund



This year we will support two charities over the festive season. We will have a non-uniform day on the last day of term (see below) and then there will be an opportunity to donate to Hosford House (homeless appeal of the East Belfast Mission) at the P1-3 nativities and the Carol Service. Your support is, as always, deeply appreciated.

LAST DAY OF TERM...



Friday 19th December will be the last day of term 1. **This will be a non-uniform day in support of the Tearfund Christmas appeal – suggested voluntary donation of £1 per pupil.**

School will close early (12.00pm for P1-4 and 12.05pm for P5-7) and the Christmas holidays will be from Monday 22nd December to Friday 2nd January 2026. School will resume after the Christmas break on Monday 5th January 2026.

GILLY'S GILNAHIRK VALUES...



HONESTY

© 2015 GILNAHIRK.COM

Don't forget, this month's Gilly's Gilnahirk Value is HONESTY.



LIFE IN SCHOOL THIS WEEK...



Another busy week in school...

P1 ENJOYING A HEALTHY BREAK...

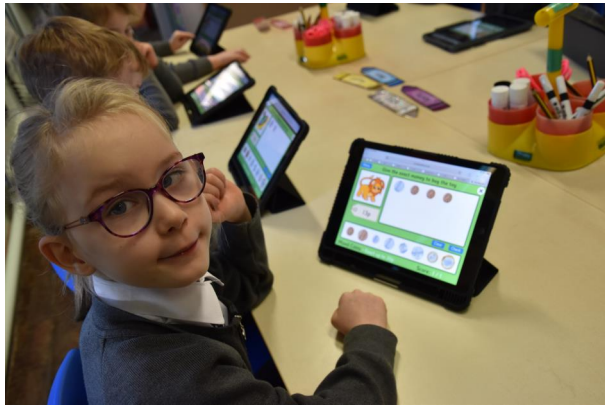
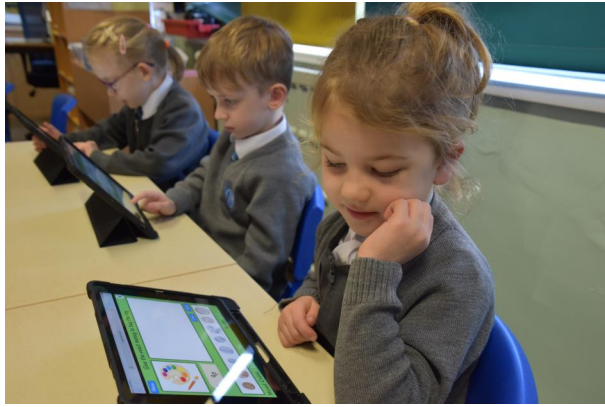






P2 NUMERACY - FUN WITH MONEY...







P3 NUMERACY...







P5 ART - CAVE PAINTINGS...







P6 ART - WINTER SCENES...











A very busy post SEAG week in P7...

P7 AERONAUTICAL ENGINEERS...







P7 CHIP DAY AND ICE CREAM SURPRISE!

P7 had their traditional chip day on the first Monday after SEAG and then Thomas from Modern Tyres (Brooke's dad), arranged for an ice cream van to come to school - thank you Thomas and the folks at Modern Tyres - we greatly appreciate your generosity!





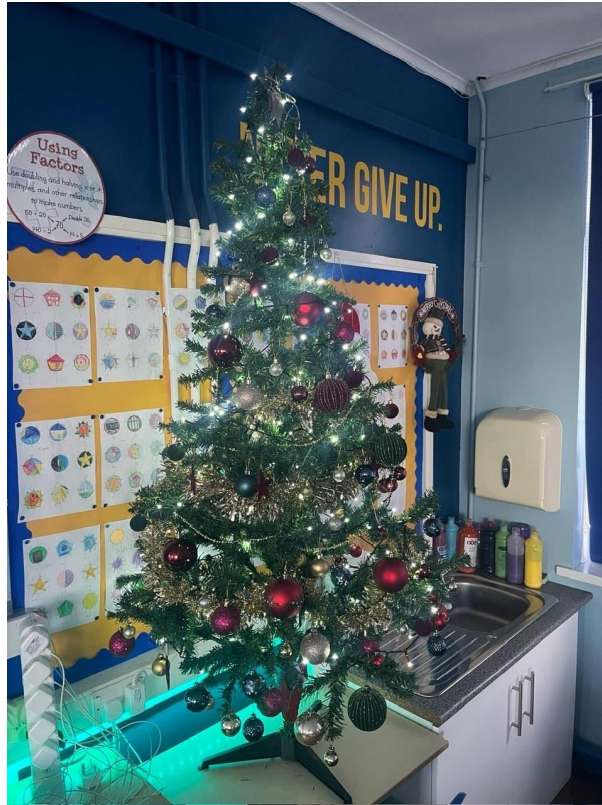






CHRISTMAS ARRIVES IN P7K...





VISIT FROM ROCHESTER INSTITUTE OF TECHNOLOGY (R.I.T.) ICE HOCKEY TEAM...













P7 BEAUTIFUL WINTER/FESTIVE ART...





P7 CHRISTMAS STORY POWERPOINTS...

P7 created Christmas Powerpoint stories, which they have written and designed themselves. They hope to read them to the P2 classes next week.





AMAZING JOURNEY AT GILNAHIRK BAPTIST...







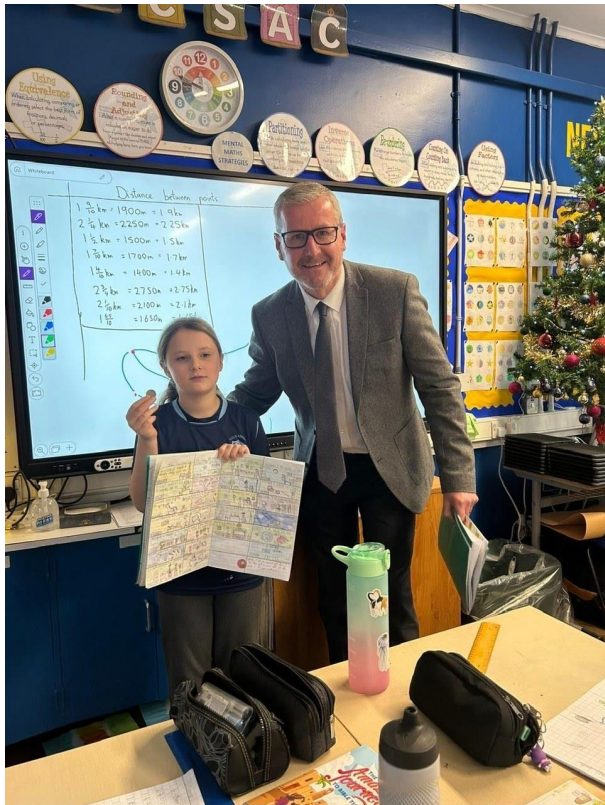


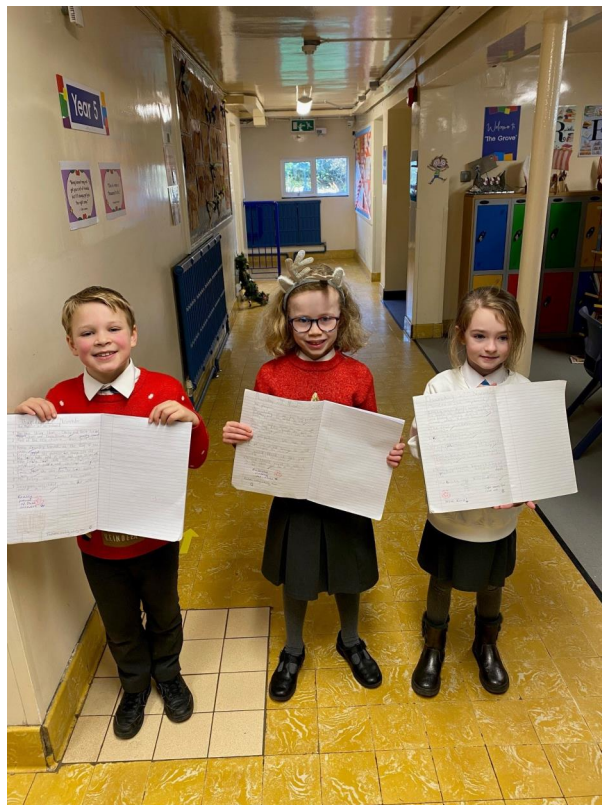
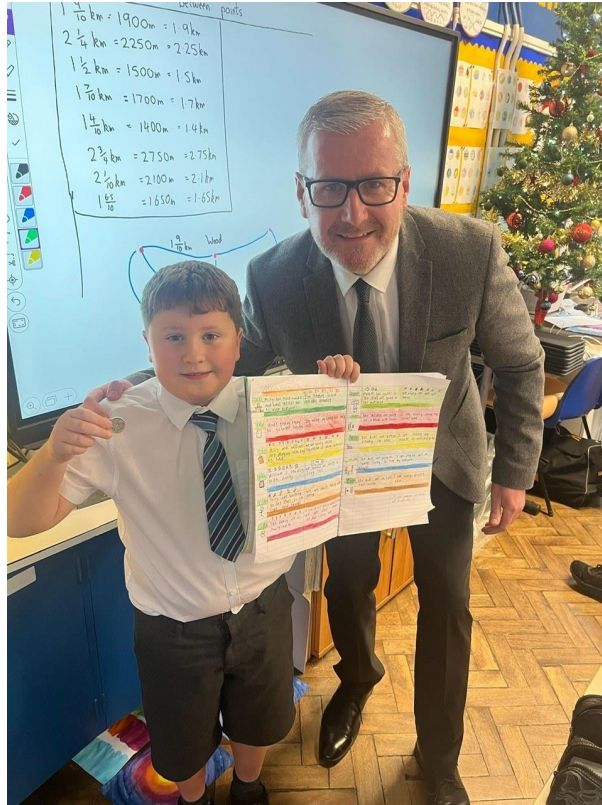


THE GILNAHIRK GALLERY OF GREATNESS...



Lucy, Lola and Dylan in P7 produced outstanding pieces of World Around Us work based on their current Victorians topic.





1 - Brilliant reading activities in P4 from Oscar, Anna and Kora. Great work!!

COMMUNITY CONNECTIONS...

Community Connections

If you are involved in any community linked activities and would like to promote them through our weekly update, please feel free to send to me via email

dcorbett546@c2kni.net

FREE EVENTS
FUN FOR THE WHOLE FAMILY

- **SATURDAY 13TH DECEMBER**
2PM - 4PM
FAMILY MOVIE TIME
JOIN US TO WATCH
"THE STAR"
PLUS VISIT SANTA AND
RECEIVE A SPECIAL GIFT.

REGISTER HERE TO
BOOK YOUR MOVIE
SEATS



OR VISIT
WWW.EXCHANGECHURCHBELFAST.COM/STAR

- **SUNDAY 21ST DECEMBER**
AT 11AM
CAROLS AND NATIVITY
CELEBRATION
FOR ALL AGES
- **SUNDAY 21ST DECEMBER**
AT 2PM
OUTDOOR CAROL
SINGING
JOIN US FOR LIVE
MUSIC, CAROLS, AND
HOT CHOCOLATE &
CHRISTMAS TREATS



EXCHANGE 37 NORTH ROAD
CHURCH BELFAST BELFAST BT5 1JN
CORNER OF N
ORANGEFIELD
WWW.EXCHANGECHURCHBELFAST.COM

FREE ENTRY

CHRISTMAS FAIR

AN EVENT FOR ALL FAMILY TO ENJOY

HANDMADE CRAFTS, CHRISTMAS DECORATIONS, GIFTS
STOCKING FILLERS

SATURDAY 29TH NOVEMBER
11AM - 1PM

KIDS CAN MAKE THEIR OWN CHRISTMAS DECORATION
PLUS FAMILY CHRISTMAS ESCAPE ROOMS!

FREE TEA, COFFEE & REFRESHMENTS
LIVE CHRISTMAS MUSIC

WWW.EXCHANGECHURCHBELFAST.COM
37 NORTH ROAD BELFAST BT5 5NE
CORNER OF NORTH ROAD & ORANGEFIELD ROAD

GET READY FOR CHRISTMAS

SATURDAY 22ND NOVEMBER
2-4 PM

COMMUNITY FUN AT
GILNAHIRK PRESBYTERIAN CHURCH
STALLS, AFTERNOON TEA,
KIDS' "MAKE AND TAKE" CRAFTS,
MUSIC, BBO

EVERYONE WELCOME

gpc
GILNAHIRK
PRESBYTERIAN CHURCH

SANTA'S WINTER-WOODLAND!
 (FEATURING 1 HOUR "SANTA-PAWS!")

FRIDAY 5TH DECEMBER 6PM-9PM
 SATURDAY 6TH DECEMBER 10AM-4PM

**SANTA'S GROTTTO, HOT FOOD, TEA & COFFEE,
 BUNS, MARKETPLACE & MORE!!!**

BOOK YOUR SANTA SLOT BY FOLLOWING
 THE LINK OR QR CODE TO 'TICKET TAILOR'
 1 SLOT PER CHILD / DOG - £7.50

CHILD SLOTS ARE AVAILABLE ON
 FRIDAY NIGHT 6PM-9PM & SATURDAY 10AM-3PM
 DOG SLOTS ARE AVAILABLE SATURDAY 3PM-4PM

GLENMACHAN CHURCH OF GOD, 13 GLENMACHAN ROAD, BT4 2NL

2 - Link to book: <https://www.tickettailor.com/events/glenmachanchurchofgod/1848802>

 Clayful
Minds

**CHRISTMAS
PARTIES**

SATURDAY 6TH DECEMBER
 BELMONT TOWER 2-5PM
 &
 SATURDAY 13TH DECEMBER
 HOLLYWOOD OLD SCHOOL HOUSE
 1-4PM

£27 PER
TICKET

FESTIVE CLAY MODELLING |
 GROUP GAMES | PARTY SNACKS
 AND TREATS | DANCE PARTY

2 PARTIES | 2 DATES | 2 THEMES!
 SCAN QR CODE TO BOOK



Made in
AND

Handmade Holiday Magic Workshop



North Down Museum
Saturday 6 December | 1pm, 2.30pm
£7.50, Suitable for ages 7+

Give the gift of creativity! This joyful event invites children to create hand-crafted treasures to give to someone special this Christmas with the help of local maker, Paula Cardiff, of Ballyholme Bay Creations. Wrapped in warmth and wonder, this is a magical way for kids to express love this holiday season!

This is a drop-off event. Please note, the room where this event takes place can only be accessed via a stairwell.



Book at ANDCulture.org.uk



Made in
AND

Handmade Holiday Magic Workshop



North Down Museum
Sat 6 Dec | 1pm, 2.30pm



A JOURNEY THROUGH NARNIA

Step through the wardrobe and into Narnia at our Christmas Tree Festival, from Wednesday 26 – Saturday 29 November!

Journey through the snowy kingdom where it's always winter and never Christmas, pop by Mr Tumnus' cosy cave, and see what happens as the snow melts and Aslan returns! Then, join us in the Micah Centre for tea, coffee and Christmas treats, Santa will also be in residence throughout the festival!

Wednesday 26 November

4pm - 8pm
7pm | Cregagh Presbyterian Handbell Choir

Thursday 27 November

4pm - 8pm
4pm | Nettlefield Primary School

Friday 28 November

4pm - 8pm
7pm | Renaissance Choir

Saturday 29 November

1pm - 4pm
2pm | Stephen Davidson

Invite your friends, family and neighbours, it's the perfect way to kick off the Christmas season. See you in Narnia!

Individual trees will be available to buy during the festival for £20 and can be collected the following week.

WILLOWFIELDCHURCH.CO.UK
FIND US 149a My Lady's Road, Woodstock Road, BT6 8FE

FREE WORKSHOPS FOR PARENTS & CARERS



Let's Talk – simple tools for building early language

TUESDAY 25TH NOV 7-8.30PM, ON ZOOM

Join Leigh, one of the Clinical Directors, and Speech and Language Therapists, at Insight Clinic for a session exploring how children learn to communicate, from first sounds to fluent conversations.

Hear Me, See Me, Know Me

WEDNESDAY 3RD DECEMBER, 7-8.30PM, ON ZOOM

A workshop for parents of children who are being assessed or are diagnosed as autistic, delivered by Elaine McGreevy- Speech & Language Therapist.

Surviving the Season: Fussy Eating & Autism Made Easier

WEDNESDAY 10TH DECEMBER, 7-8.30PM, ON ZOOM

A session on fussy eating and autism with Dr Kirsty Porter, Children's Dietitian at Nutrition4kidsNI.

CALL 0808 8020 400 NOW FOR MORE
INFORMATION OR TO BOOK YOUR PLACE



Hear me, See me, Know me

A workshop for parents of children who are being assessed or are diagnosed as autistic- delivered by Elaine McGreevy- Speech & Language Therapist

- Support communication preferences
- Understand sensory experiences & attention
- Communicate with a child/young person in distress

When: Wednesday 3rd December

Time: 7-8.30pm, on Zoom

To book a place call
free 0808 8020 400



Access
Communication
Embracing Neurodiversity



Surviving the Season: Fussy Eating & Autism Made Easier

Join our session on fussy eating and autism, led by
Dr Kirsty Porter a Children's Dietitian from
Nutrition4kidsNI.

Discover practical strategies to help master fussy
eating including mealtime challenges, sensory
eating and food acceptance tips.

When: Wednesday 10th December

Time: 7-8.30pm, on Zoom

To book a place call free

0808 8020 400



Avian Influenza ADVICE

Avian influenza has been detected in wild birds in Northern Ireland



The public should avoid contact with wild birds including their feathers and waste.

- Do not pick up or touch sick, dying or dead wild birds.
- Avoid contact with surfaces contaminated with bird faeces.

Please keep to the footpath and keep your dogs on a lead.

If you find a dead bird, do not touch or move it.
If you find dead waterfowl (swans, geese or ducks) or gulls or birds of prey, report it to the DAERA helpline:

0300 200 7840



This advice has been provided by the Public Health Agency



Spotted a dead wild bird?



- ✓ Use the 'DAERA Dead Wild Bird Online Reporting Tool' service if you find dead gulls, waders, ducks, geese or swans

Visit
www.daera-ni.gov.uk/report-dead-wild-bird
or
scan the QR code



* Do not pick up or touch sick, dying or dead wild birds, Avoid contact with bird faeces.



KEY DATES FOR TERM 1



- **Friday 5th December** - Open Morning for prospective parents of P1 children (starting September 2026) - 11am - 12.30pm
- **Friday 5th December** - Christmas wreath making evening (details above)
- **Saturday 6th December** - Christmas Tree sale and fair (details above)
- **Tuesday 9th and Wednesday 10th December** - P1-3 nativities (details above)
- **Thursday 11 December** - KS2 cinema trip (details above)
- **Wednesday 17th December** - Carol Service at Our Lady and St Pat's College, 7pm
- **Friday 19th December** - school closes for Christmas break - early finish (12.00 for P1-4, 12.05 for P5-7)
- **Monday 22nd December - Friday 2nd January** - school closed for Christmas break
- **Monday 5th January 2026** - school resumes for term 2

Enjoy your weekend.

With kind regards

D Corbett

Principal.



designed by freepik